

脳内神経系統図

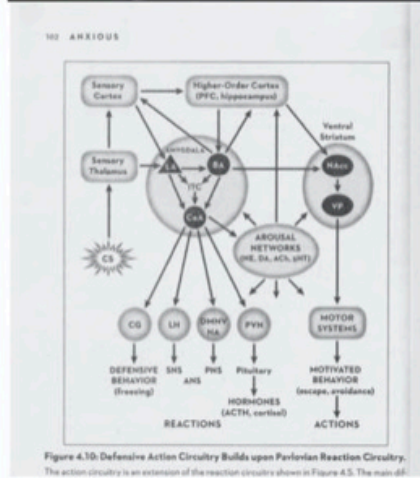
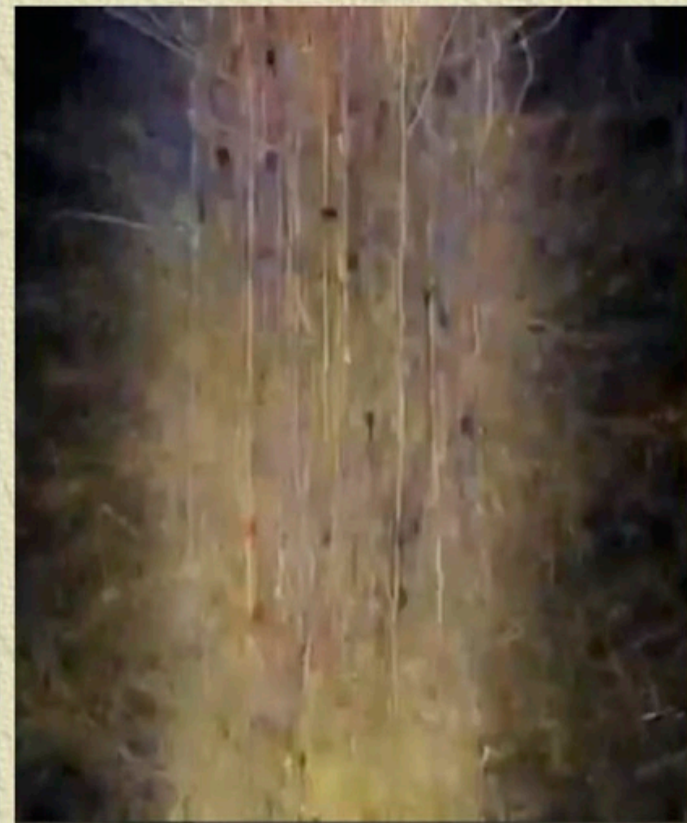
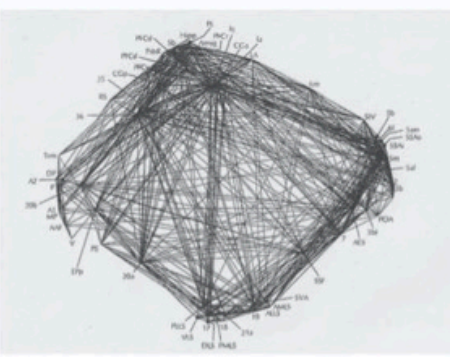
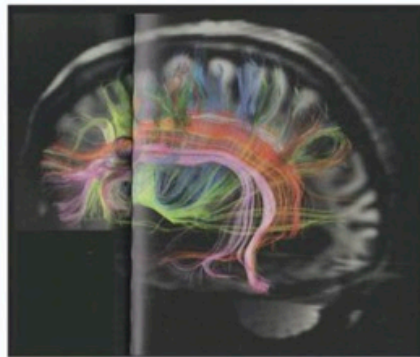


Figure 4.10. Defensive Action Circuitry Builds upon Perforant Reaction Circuitry. The action circuitry is an extension of the reaction circuitry shown in Figure 4.5. The main dif-

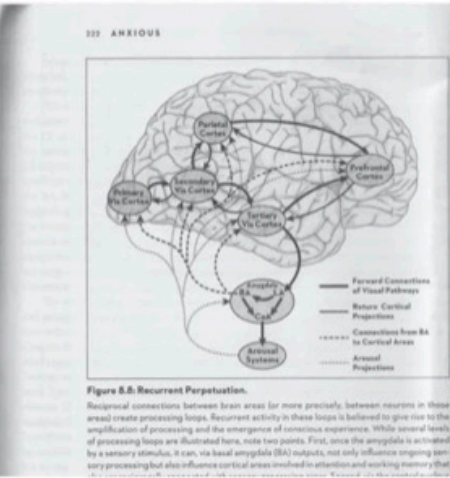


Figure 8.8. Recurrent Perpetuation. Reciprocal connections between brain areas (or more precisely, between neurons in these areas) create processing loops. Recurrent activity in these loops is believed to give rise to the amplification of processing and the emergence of conscious experience. While several levels of processing loops are illustrated here, note two points. First, once the amygdala is activated by a sensory stimulus, it can, via basal ganglia (BA) outputs, not only influence ongoing sensory processing but also influence cortical areas involved in attention and working memory that

原典: 左上: from 『脳と心のしくみ』 by 池谷裕二、 pages 14 - 15

中上: from "A Universe of Consciousness" by Gerald Edelman & Giulio Tononi, Page 115

左下: from "Anxious" by Joseph LeDoux, page 102

中下: from "Anxious" by Joseph LeDoux, page 218

右: from the TED lecture "A brain in a supercomputer" presented by Henry Markram

<https://www.youtube.com/watch?v=LS3wMC2BpxU&t=678s>